

**3. The Details.** Glaze the windows on the inside after painting the inside black. The curtains on the split front windows are painted medium brown and then off-white is applied dry brush over the tops of the curtains leaving the brown as a shadow. The glazing for these two windows has to be cut out with care to match the shape of the windows (\*We have included laser cut windows for ease of application). A dot or two of C/A will bond the glass in place. The roof can now be applied. I used 5 Minute Epoxy for this as I wanted to move the roof around slightly to get it centered perfectly before the glue dried. Paint the A/C unit and the swamp cooler as you wish. Bond these in place as shown. Add the tiny vent at rooftop as shown. Paint the rest of the little detail pieces. As a final touch add the painted wheels, (\*lamp) and the hitch at the front as shown. Apply the yard office signs and you're all set.

Designed and mastered by Thomas A Yorke  
Produced by Frenchman River Model Works

---

We offer many detail parts to complete your scene such as crates, barrels, 55 gallon steel drums, pallets, and other details to populate your scene.

All these items are available separately at:

[www.frenchmanriver.com](http://www.frenchmanriver.com)

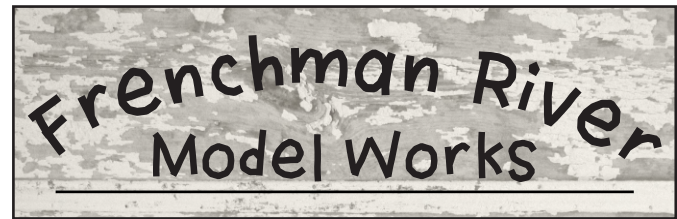
---

Thank you for purchasing this kit. We hope you enjoy building and displaying this Yard Office Trailer as much as we have enjoyed producing it. If you have any questions or comments, please email us at: frenchmanriver@gmail.com or send a letter to the address below.



**Made in the USA**  
Frenchman River Model Works  
PO Box 86  
Langdon, ND 58249  
(701) 256-2129  
[www.frenchmanriver.com](http://www.frenchmanriver.com)

Frenchman River Model Works reserves the right to change or alter this kit without prior notice. This kit, its contents, and its packaging are all ©copyright protected.  
©2024 Thomas A Yorke      © 2025 James and Anna Cleveland



# YARD OFFICE TRAILER



---

"A yard office made from an old 1930's travel trailer. Management says this office provides all the space needed and at a very reasonable price! Just add an A/C unit and a swamp cooler and it provides all the comforts of home." -Thomas Yorke

---

## Cautions

Kit contains small and/or sharp parts  
**NOT SUITABLE FOR CHILDREN UNDER THE AGE OF 14**  
Always wear your safety glasses when you are working with CA glues and when cutting, shaping, or snipping parts and when painting.  
Also use adequate ventilation when working with glue or paint.

**Kit Contents****RESIN PARTS**

- 1 Front Wall
- 1 Rear Wall
- 2 Side Walls
- 1 Frame
- 1 Roof
- 2 Wheels
- 1 Vent Cover
- 1 Third Wheel Assembly (2 Piece)
- 1 Rear Bumper
- 1 Propane Tank
- 1 Swamp Cooler
- 1 Window Air Conditioner
- 1 Arm Chair
- 1 Barrel/Box Stack
- 1 Trash Can w/ Trash

**MISC**

- 1 Window Glazing
- 1 Wire
- 1 Signs
- 1 Lamp Reflector w/ Bulb
- 1 Styrene Vent

**Kit Notes**

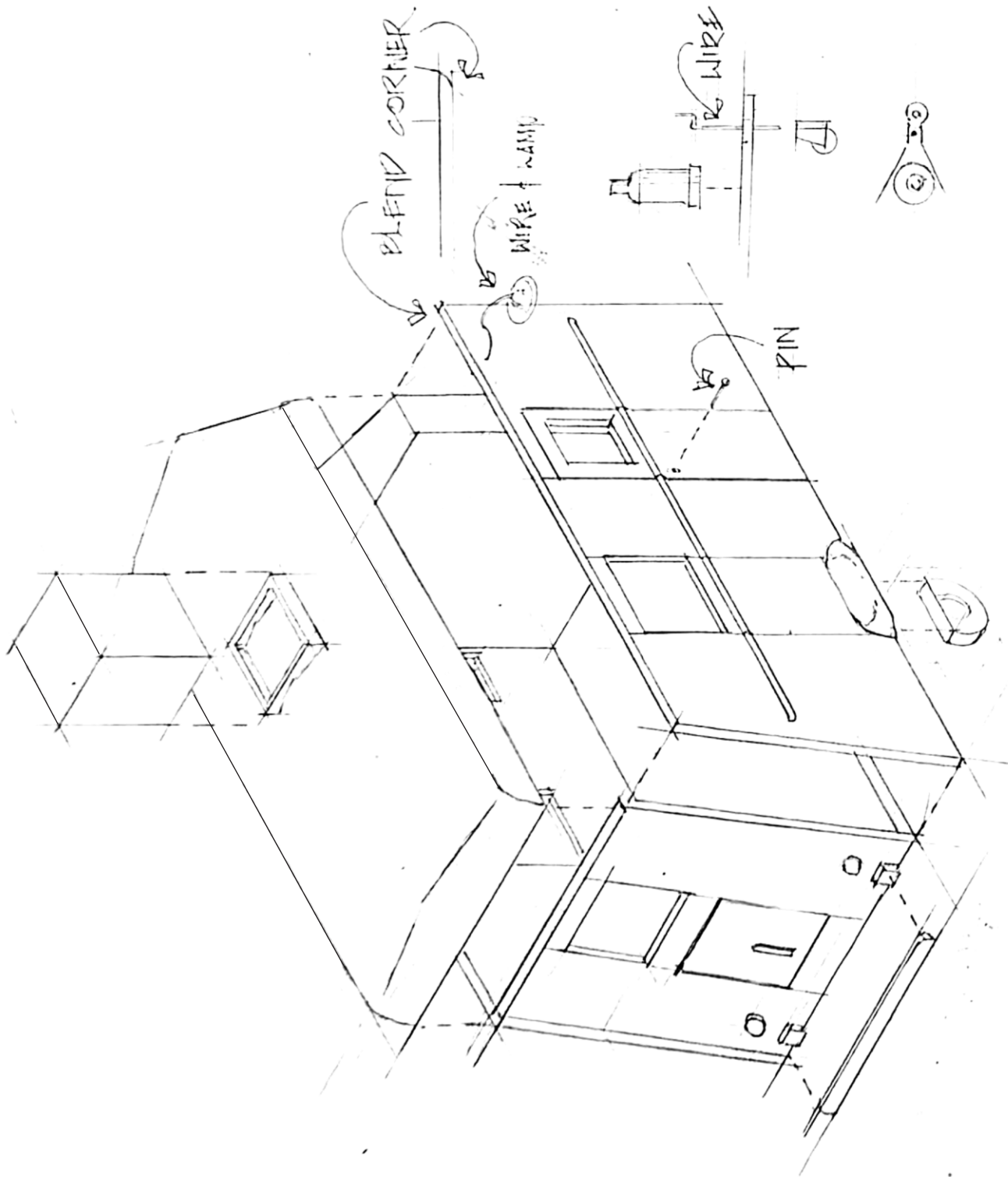
This kit was originally designed by Thomas Yorke exclusively for production by Frenchman River Model Works. We have tried to keep it as true to his original design and construction as possible. The following are his original instructions. Any changes or clarifications have been marked with an asterisk.

**YARD OFFICE TRAILER**

(\*remove any flash from the resin castings with an X-Acto knife. Be sure to wash all resin parts in warm soapy water, rinse and let dry)

1. **The Body Assembly.** Work on a flat piece of glass. Start with the frame piece and the front wall. Bond these together with C/A. Keep the front wall perfectly square and be sure it is centered. Bond the first side wall in place. Repeat for the second side wall. When set, the rear wall can be bonded into place. You may need to use a tiny bit of Spackling Paste to fill in around the edges.

2. **The Painting.** It is best to paint the body and roof at this point. Color and weathering is up to the modeler. Some units were left in a shiny silver, while others were painted in one or two colors. Usually, the darker color was below the belt rail. Of course, if this is a used trailer, it can be any color desired. Weathering is entirely up to the modeler. I chose a light green below the belt with natural silver above as well as the roof. My unit shows that it was not cared for at all and so was sold cheap. I used acrylic paints after an initial spray of flat white. I used a 1/2" flat Sable brush for this. This brush size allows for a smooth finish and covers well so only a few strokes are needed per side. I used three coats of straight from the bottle color. Next, I mixed up a medium wash of light gray and brushed it on in several coats to the upper body and roof sections. Then I stippled a little of the same mix over all-several times with a small brush. I then darkened the mix a little with a drop of brown-still stippling. I mixed a medium wash of silver and applied it in a stippling manner also. Several coats worth. This adds a metallic look to the surface. The entire roof was done this way also even though most of it would be hidden under a layer of rust. Brown washes were applied overall. Very light at first and then building up to a nice medium dark tone. Now comes the fun! I used dry pigments to weather the entire trailer unit. Dark brown, red brown, orange and finally two kinds of light brown. I used a tiny brush for most of these applications. Give the parts a coat of DullCote and let set. I went back with thinned dark brown paint and a tiny brush and dotted color over some of the darker browns that were present on the surfaces. With the same brush I used terra cotta brown and dotted it on top of some of the darkest areas and quickly used a touch of water to blend it into the darker browns. This will liven up the rust quite a bit on the model. A final application of dry pigments finished the weathering. Another cote of DullCote was applied.



TRAVEL TRAILER YARD OFFICE  
© 2024 T. A. YORSE

Frenchman River  
Model Works  
KIT # 5405  
**YARD  
OFFICE  
TRAILER**  
FRENCHMANRIVER.COM

