

BRICK FIREHOUSE

3. **Details.** Install all windows including the bay door windows. The Venetian blinds are cut from white paper that can be easily painted any color desired or left as they are. Cut the Venetian blinds as desired and apply them to the inside of the desired windows.

Assemble the fire escape. Install the bay door as desired centering it in the opening. Apply signs as desired. We used 2 of the large signs as a sandwich board sign. The remaining signs may be used as posters for the building or other buildings around your town.

This kit is an original creation by James and Anna Cleveland and is produced by Frenchman River Model Works



*Fire Truck not included

We offer many detail parts to complete your scene such as crates, barrels, 55 gallon steel drums, pallets, trash cans, and electric meter assembly to complete your scene.

All these items are available separately at:

www.frenchmanriver.com

Thank you for purchasing this kit. We hope you enjoy building and displaying the Brick Firehouse as much as we have enjoyed producing it. If you have any questions or comments, please email us at: frenchmanriver@gmail.com or send a letter to the address below.



Made in the USA

Frenchman River Model Works
PO Box 86
Langdon, ND 58249
(701) 256-2129
www.frenchmanriver.com

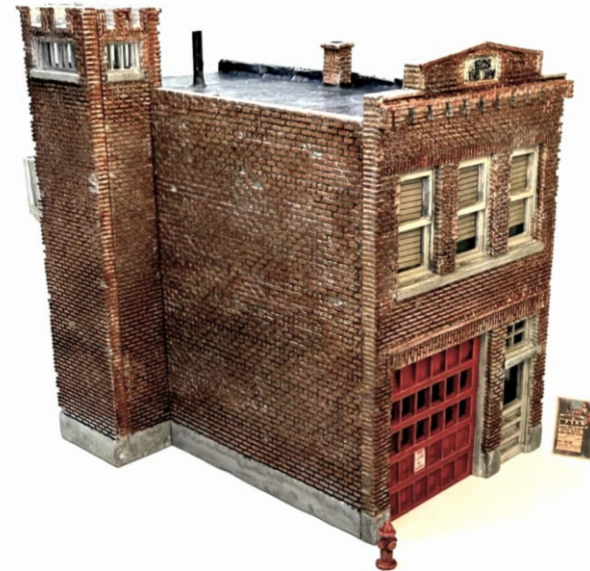
Frenchman River Model Works reserves the right to change or alter this kit without prior notice. This kit, its contents, and its packaging are all ©copyright protected.
© 2024 James and Anna Cleveland

HO 1:87 SCALE KIT #641



BRICK FIREHOUSE

display built by James and Anna Cleveland
Frenchman River Model Works



After the original No 1 wooden firehouse burned down, the town of Stinkwater Crik built this brick firehouse to replace it. Despite the murmurings of suspected arson, the devastating fire was chalked up to the theory that volunteers weren't motivated to show up in time to extinguish the blaze, so the city also implemented the first paid fire fighter positions in the area. Cheers to progress!

Cautions

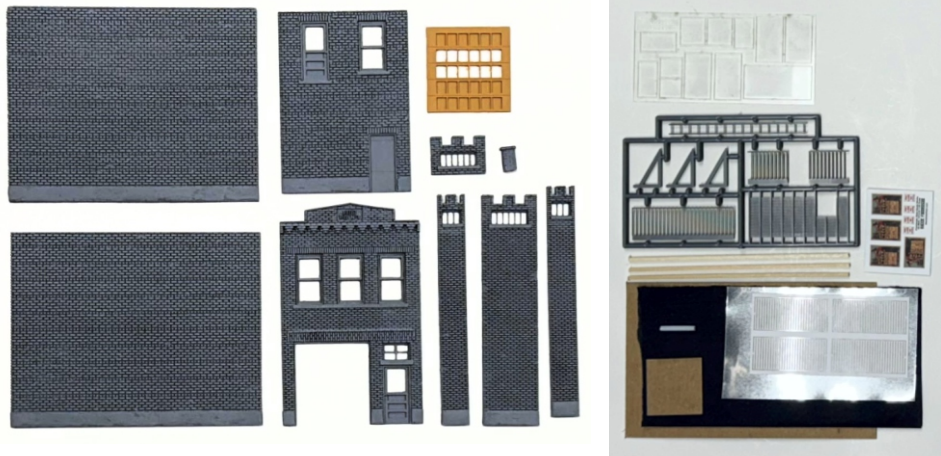
Kit contains small and/or sharp parts
NOT SUITABLE FOR CHILDREN UNDER THE AGE OF 14
Always wear your safety glasses when you are working with CA glues and when cutting, shaping, or snipping parts and when painting.
Also use adequate ventilation when working with glue or paint.

Kit Contents**RESIN PARTS**

- 1 Front Wall
- 1 Back Wall
- 2 Side Walls
- 1 Tower Assembly
(4 piece)
- 1 Bay Door
- 1 Chimney
- 1 Fire Hydrant

MISCELLANEOUS PARTS

- 3 1/16 x 1/16 Lumber
- 2 Card Sub Roof
- 1 Roofing Material
- 1 Roof Vent 3/32" Tube
- 1 Sign Set
- 1 Window Glazing
- 1 Fire Escape
- 1 Venetian Blind Set
- 1 Aluminum Flashing

**Kit Notes**

This kit is an original design by James and Anna Cleveland with all original masters hand worked and detailed by James Cleveland.

BRICK FIREHOUSE

This 2 story structure depicts a brick, single stall firehouse that was both functional and somewhat ornate and right at home anywhere from the 1900's to present. The tower attached to the firehouse was used to hang the hoses up to dry and the living quarters on the second floor housed the on-duty firefighters. The slight wave in the bricks belies the rumors that Mickey, the local mason, spends way too much time at the local tavern. The hose drying tower can be placed on either of the side walls as desired. A small footprint and tons of character make this an ideal addition to any small town or city scene.

Clean up any "flash" on the resin castings. Wash all resin parts in warm soapy water, rinse and dry. Any bubbles in the resin can easily be filled with a drop of CA glue or hobby putty. Allow to dry and sand flush with the part being careful to not sand off any details.

Please read through the instructions and study the plans and photos before starting any assembly. There are many helpful photos on our website listing for this kit. Painting suggestions are located on the figures/pictures page.

1. The Assembly. It is helpful to do the assembly work on a flat surface such as a piece of glass to make sure the bottoms are all even and square. Glue the 2 Side Walls to the back of the Front Wall making sure they are square. Glue the Rear Wall between the ends of the 2 Side Walls. **TOWER ASSEMBLY:** Glue the Narrow Side Pieces to the back of the Wide Tower Wall. Place the tower assembly against the side wall where you intend to position it and locate the remaining short tower wall so that it fits on top of the side wall of the main building. Tack the small wall in place on the tower assembly. Remove the tower to finish glueing tower assembly. We recommend glueing the tower assembly in place on the main building after they are both painted and windows are installed. See painting instructions for more details.

2. The Roof. Cut the 1/16" x 1/16" wood strips to fit along the inside of each side wall of the main building. These wood strips get glued in place to support the sub roof. Make sure the top of the wood is flush with the top of the back wall and slightly angle them up toward the front wall. Cut a short piece to fit along the front wall. (Fig 1) Cut the sub roof to fit allowing it to overhang the rear wall slightly. For the tower roof, cut pieces of 1/16" x 1/16" to fit around the inside of the tower where you would like your roofing. We placed the roof just below the cut outs and above the windows. Cut sub roof to fit inside the tower walls. Glue all sub roof in place. Cut the tissue paper into scale 3-4' strips and glue in place on the roof and up the back of the cornice. White craft glue works well for this. Glue the chimney and roof vent in place. Using some small pieces of tissue paper, cover the tower roof using the same method.



Frenchman River
Model Works
KIT #641
HO 1:87 SCALE
BRICK
FIREHOUSE
WWW.FRENCHMANRIVER.COM

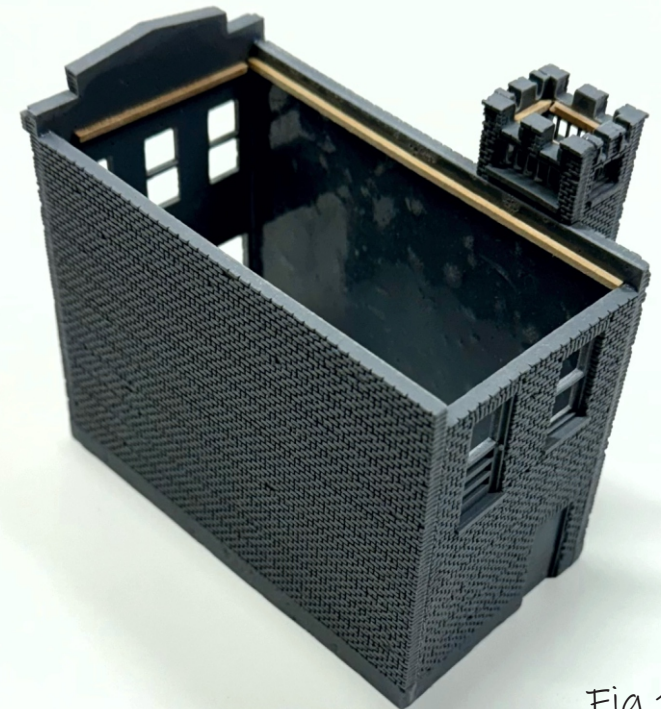
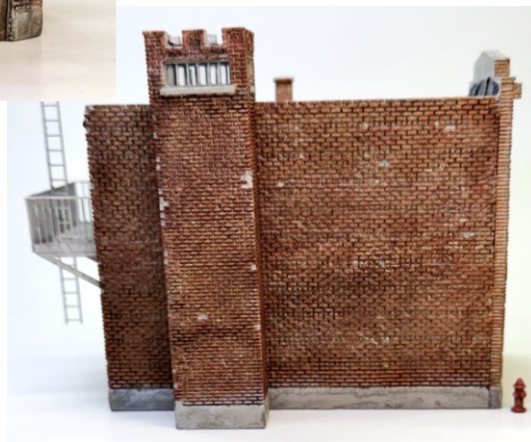


Fig 1



*Fire Truck not included



PAINTING SUGGESTIONS

Use your favorite method, spray can, air brush or craft paints. We used spray paint from a can and acrylic hobby paint applied with a brush. Some parts may be easier to paint before assembly, so plan accordingly. **TIP:** If you're having a hard time with the acrylic paint beading up, try adding a drop or 2 of rubbing alcohol. Additionally, rubbing alcohol will take acrylic paint off if you want to start over and try again. **To Start:** We assembled the building and tower without the tower attached and then sprayed each assembly with Rust-oleum brand Satin Smokey Beige spray paint. **Bricks:** Place a small amount of Americana DecoArt Brand Burnt Sienna and Antique Maroon on your palette. Using your medium sized flat paintbrush mix a small amount of the 2 colors in a 3:1 ratio to achieve the brick color we used. Do a small batch of color mixing at a time. The variation in the mix will add to the realistic appearance of the brick. Carefully brush the paint over the bricks to just paint the surface without painting the mortar lines. Don't overload your brush and use a light hand. **Date Plaque:** Paint the entire plaque with white. When this is dry just hit the tops of the lettering with black on a small, flat paintbrush. **Concrete:** Paint all concrete with Americana Brand DecoArt Cobblestone. **Doors and Windows:** These are left the spray paint color. The bay door was painted with Rust-Oleum Apple Red. The back door was painted black and then dry brushed with silver. Dry pigments were added for rust.

Details: **Fire Hydrant:** Apple Barrel Brand Crimson **Fire Escape:** Rust-oleum Satin Smokey Beige Spray Paint

Additional steps: It is advised to spray the model with matte acrylic spray after painting to seal the acrylic paints since any black wash that contains alcohol will soften and remove the acrylic paint! Mix a thin black wash (water and black paint or India Ink with Rubbing Alcohol) and apply wash to all painted surfaces allowing the color to settle into details and cracks. If this is beading up, try adding a few drops of rubbing alcohol. Consider sealing this step with matte acrylic spray paint. After this is dry, use a dry brush technique with white paint to highlight all the details. Finish with any weathering pigments to add a dusty effect if desired. Be sure to seal everything with matte acrylic spray to create a long lasting, homogenous finish. Please note that this will "fog" the windows. Install windows after this if this effect is not desired.