

FRENCHMAN RIVER MODEL WORKS O/ON30 1:48 SCALE ROSANN'S CAFE

necessary and did not include in kit) and, if desired, cut a floor from scrap card stock (*not included). Cut the sub-roof to fit with a slight overhang on 3 sides and apply with CA. The pre-sprayed base coated walls can now be stained with more thin Brown stain. Apply in coats, one after another after each is dry. Repeat until a rich Brown is achieved. Darken some boards with successive applications of stain. A few boards could have been re-utilized from other sources and are thusly of different colors. This adds a little depth and color. Use the corrugated material to cover the roof. Let a little overhang at the three edges around. Using a flat brush, use some White acrylic and brush over the boards to lighten them. Just go over the high spots. Paint the corrugated sections in Dark Brown and use dry pigments to weather. Some can also represent new material and can be painted a Light Grey with a little Silver dry-brushed over. Cut pieces of pre-stained 1/16"x 1/8" lumber to use as floor joists. Use white glue to apply. 1/8" square lumber can be used as posts.

6. The Base. I mounted my building on a piece of thin Styrofoam and carved the base to slope at the rear. A card base was cut as a foundation under the main building. The addition "floats". Be sure to paint the card heavily to keep the water in the Spackle from affecting it! I used Spackling Compound to fill in and level out the area under the foundation to form a "concrete" one. The base was covered by the initial application of basic ground cover and the building was bonded into place with CA. Add the rear addition and the wooden posts below. Paint the sidewalk and bond in place with CA. Paint the concrete steps at the rear addition and apply. Add the final ground cover and vegetation. The front sign and air cooler can now be added. Trash cans and old boxes can be used as additional details (*not included). A few old Coke containers would look great too! Why not add an old chair for the cook to rest upon between duties?

Designed and patterned by Thomas A. Yorke for exclusive use by Frenchman River Model Works

Produced by Frenchman River Model Works

We offer many detail parts to complete your scene such as crates, barrels, 55 gallon steel drums, pallets, and other details to populate your scene.

All these items are available separately at:

www.frenchmanriver.com

Thank you for purchasing this kit. We hope you enjoy building and displaying this Rosann's Cafe as much as we have enjoyed producing it. If you have any questions or comments, please email us at: frenchmanriver@gmail.com or send a letter to the address below.



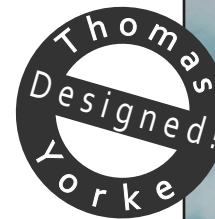
Made in the USA
Frenchman River Model Works
PO Box 86
Langdon, ND 58249
(701) 256-2129
www.frenchmanriver.com

Frenchman River Model Works reserves the right to change or alter this kit without prior notice. This kit, its contents, and its packaging are all ©copyright protected.
©2023 Thomas A Yorke © 2024 James and Anna Cleveland

O/On30 (1:48) SCALE KIT #5366



Rosann's Run Down Café



model assembled and painted by
Thomas Yorke

A new kit for a small café. This kit features a cornice covered with stamped metal shapes to make it look more impressive. This was a feature done before the turn of the Century (1880's) by several metal manufacturers including the famous Mesker Brothers Iron Works. After WW2, it became favorable to remove such decorative trim in favor of a more trim, modern look. Too bad! Over the years this trim started to sag and peel away from the wooden framework keeping it in place. That is one of the special features of this kit. It can be made to look as new or old and worn. Through the use of aluminum tape, this can be accomplished quite easily for a really special look.

Cautions

Kit contains small and/or sharp parts
NOT SUITABLE FOR CHILDREN UNDER THE AGE OF 14
Always wear your safety glasses when you are working with CA glues and when cutting, shaping, or snipping parts and when painting.
Also use adequate ventilation when working with glue or paint.

Kit Contents

RESIN PARTS

- 1 Store Front
- 2 Columns
- 2 Cornice End Pieces
- 1 Cornice Base
- 1 Cornice
- 2 Side Walls
- 1 Rear Wall
- 3 Rear Addition Walls
- 2 Doors
- 1 Window
- 1 Curtain
- 1 Corrugated Insert
- 1 Sign Assembly (4 pieces)
- 1 Swamp Cooler
- 1 Window Air Conditioner
- 3 Swamp Cooler Supports
- 1 Rear Steps
- 1 Roof Vent Assembly (3 pieces)
- 1 Sidewalk Section



MISCELLANEOUS PARTS

- 1 Window Glazing
- 2 Card Sub Roof
- 1 Tar Paper Roofing Material
- 1 Corrugated Metal
- 3 1/8" x 1/8" Lumber
- 2 1/16" x 1/8" Lumber
- 1 Aluminum Flashing
- 1 1/8" Styrene Tube
- 1 Decal Sheet
- 1 Sign Set
- 1 Wire
- 1 Plywood (not shown)



Kit Notes

This kit was originally designed by Thomas Yorke exclusively for production by Frenchman River Model Works. We have tried to keep it as true to his original design and construction as possible. The following are his original instructions. Any changes have been marked with an asterisk.

Rosann's Cafe

Rosann is serving up delicious home cooked meals in this brick building store front loaded with character! Add this neighborhood café to your layout for a nostalgic touch of daily life.

This kit has been freshly resigned and updated in 2023 directly by Thomas Yorke and never previously offered for sale. Beautiful, hand sculpted brickwork and wooden storefront make this a unique building loaded with authentic character. This building would be appropriate for any era from 1890's to present and can easily be repurposed into any number of businesses.

spray white, the brick upper parts are given a coat of acrylic your choice of a Brick-Red. Let this dry. Paint the concrete section acrylic Concrete and let dry. Spray entire wall with Dull Cote. Then, using marker pens, color random bricks with a variety of brick colors. Spray again with Dull Cote. Use Artist's Gesso and a large, stiff brush and apply the white paint into the cracks right over the bricks. Immediately wipe off with a clean, dry cloth. Repeat until entire wall is finished. The white color will also tone down the bricks a little. Only the upper portion of the rear wall need be used as the lower portion will be covered by the addition. This is a good section on which to practice. Apply the ghost sign over a White painted wall section directly under it. Use acrylic colors to finish the sign and wall under it. I painted some White over the "Coke" letters to heighten them, but I left areas open to look as though they chipped off years ago. See photos. These three walls can then be bonded together using CA and 1/8" square corner bracing material (*we didn't use bracing and did not find it necessary and didn't include in the kit, however you may use scraps of wood if you feel bracing is necessary). Be sure to lightly sand the side walls where they meet the front, so they are perfectly flat. Use the front wall as a guide for spacing and work on a level surface. The front wall can now be bonded into place.

4. The Roofing. Use the 1/8" square wood (*included) and run this along the inside of the top walls along with the front as shown on the side view. Cut the card roofing to fit and apply with CA. Use Spackling Compound and form angles up the side walls on the inside to form a sloping parapet wall inner side. Let dry and lightly sand smooth if necessary. This need not be perfect because it will be covered by the roofing paper. It is just a form. Spray paint the roofing paper in the color desired and cut into scale 3' sections (*black tissue paper has been supplied). Start at the lowest edge of the roof - the rear. Use white glue and coat under the 3' section on both the roofing card and the tissue. Apply paper to glued area and brush down with more glue using the still brush. Go up the sloped wall section and let the paper fit over the top of the wall. It can be trimmed later after dry. Keep going until entire roof is finished. Make sure all edges of the paper are glued down. When dry after trimming the side overhang, the roof can be stained with a black/brown mix. Paint tar lines along the paper edges with a fine tip, pointed brush. Use Black acrylic right from the bottle for this. The top edge of the roof at the inside of the cornice should get a piece of aluminum tape about 1/4" in width run along the inside edge to seal against "water". The roof vent can be assembled with a little scrap piece at the rear to level it. After paint, it can be bonded into place with CA. This is the high capacity-kitchen vent.

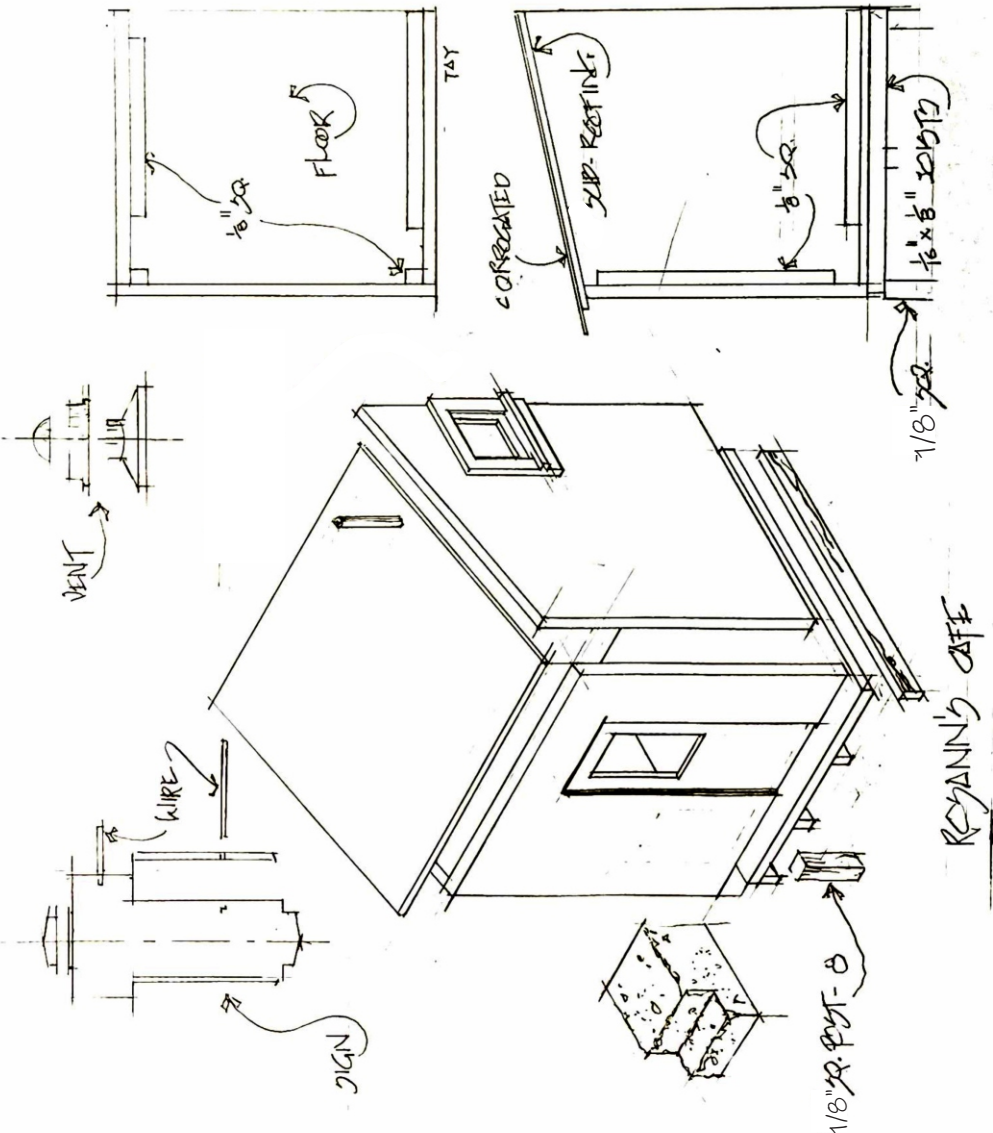
5. The Shed Addition. The three walls can be assembled using CA. Keep them level and square. Cut braces from the 1/8" square material (*we didn't find this

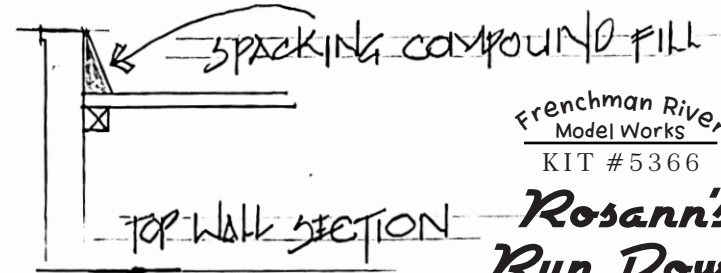
(*remove any flash from the resin castings with an X-Acto. Be sure to wash all resin parts in warm soapy water, rinse and let dry)

1. The Front Wall. It is best to finish this wall first. Work on a flat surface. Attach the columns to outer wall edges using CA glue. Keep the bottom of the wall level. Add the middle upper section. Add the trim to the bottom of the window area. Plug the upper walls, if desired, with the plywood supplied. The upper section of the wall (cornice) can be added now. Add the aluminum tape by cutting thin strips and backing them, sticky side to sticky side and trim to fit. Form the tape over the wall and glue in place partly over the open area with CA. Let dry completely. Wrap the left column top piece with tape and press to fit contours. Peel away in places. When dry, coat the underside of the exposed tape with more CA to stiffen it. Let set. The end column tops can now be added. Assemble the cooler shelf and add using CA. Do not place the cooler atop, at this time. Assemble the front sign, paint and letter (decal). Drill holes for mounting, but do not mount at this time. Decal the front wall as you wish.

2. The Painting. I used a flat white spray can to apply undercoat over all resin parts. When dry, I mixed up a batch of dark Brown acrylic paint and a lot of water to form a thin stain. This was applied with a large 1/2" flat Sable brush overall. Don't worry about coverage. Many coats later will take care of this. Give all resin parts this wash. Repeat until a nice medium brown is present. Let's finish the front wall. I used acrylic Light Ivory as a base color and then used Linen Tole as a top layer. I mixed up a thin batch of Ivory stain to apply first. This layer was applied with a stippling technique. I let some of the Brown stain show through. Two layers were applied. Each fairly thin. The top coat was applied in the same manner. I again let some Brown along with some Ivory show through giving a nice, rich color effect. It is subtle; however, it looks great. I lightly stained the plywood pieces in white. I mixed up another small batch of light Turquoise as the trim color for the two panels above and below the window. I painted the door Red and after dry, used CA to adhere in place. The air cooler was painted in a light Green and aged with Brown stains. The metal cornice detail was painted in a rust color over the white base. This was aged with brown stain. The entire front wall was given a very light application of Brown stain overall to tie it together and tone it down a little. The window can be glazed, and the decal applied to the inside. The curtain should be given a coat of Linen Tole and when dry, use some brown stain overall and immediately wipe off with fingertip. Repeat if a darker look is desired in the recessed areas. It looks best if some white is left in the high spots. Do not add the air cooler or sign until assembly. A little rust can be added around the metal parts on the front wall to highlight detail a bit. Set this wall aside.

3. The Main Walls. The three main walls are next. Already given a base coat of

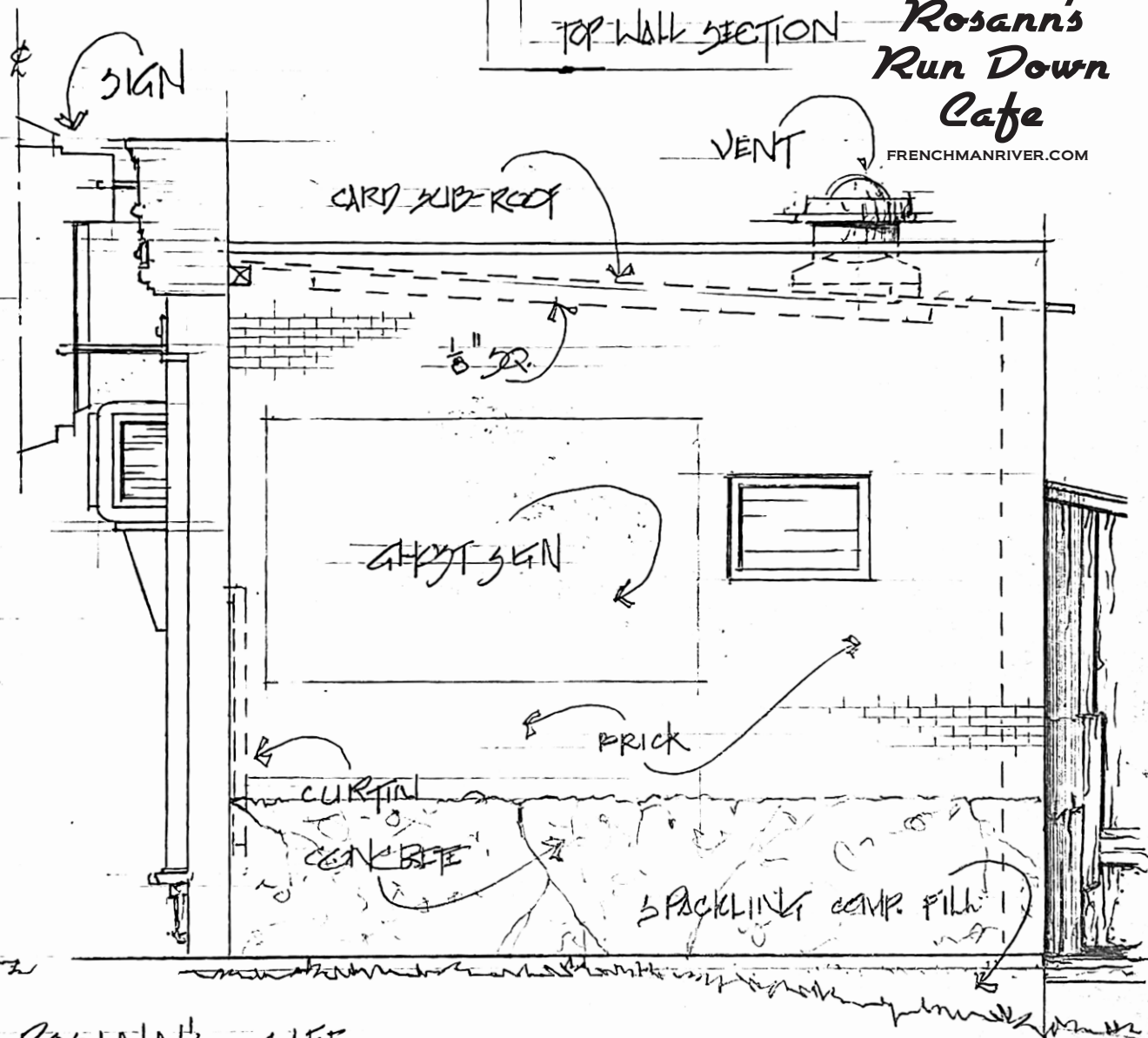
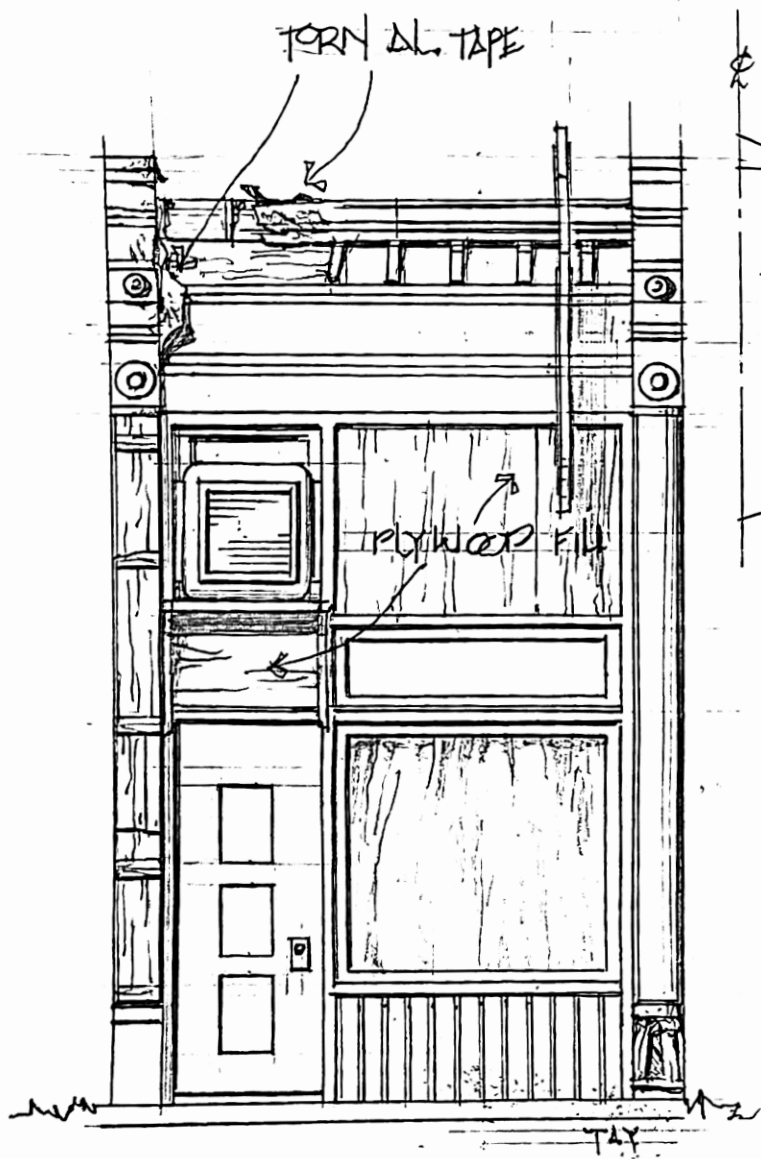




Frenchman River
Model Works
KIT #5366

**Rosann's
Run Down
Cafe**

FRENCHMANRIVER.COM



ROSANN'S CAFE